

Storm Sewer Awareness

There are generally three classifications of Storm Sewer

Public drain systems that are maintained by the Road Commission for Oakland County (typically located in roadways or adjacent to roads within the road right-of-way.)

Public drain systems that are maintained by the Oakland County Drain Commission (typically located within drainage easements outside the road right-of-way.)

Private drain systems that are maintained by an individual homeowner or subdivision associations (located both within and outside of the road right-of-way.)

Distinguishing Storm Sewer from Sanitary Sewer

Storm sewers are completely separate systems from sanitary sewers.

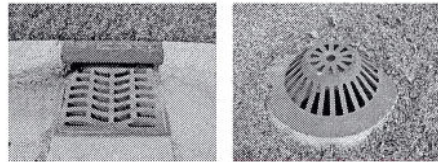
Storm sewers collect and control storm water (rain water) and convey that drainage to a pond, wetland, lake or stream.

Sanitary sewers collect sewage which is conveyed to a sewer treatment plant where it can be properly treated before it is released back into the environment.

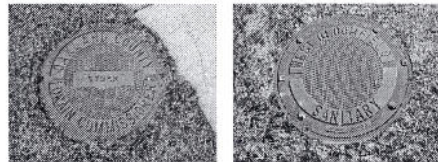
Storm sewer manholes will usually be labeled "Storm" or the manhole rim will have slots or holes (catch basins) for water infiltration.

Sanitary sewer manholes will usually be labeled "Sanitary" and are typically bolted down.

CATCH BASINS



MANHOLES



Storm Sewer Maintenance

Inspecting the storm sewer in your community, whether private or public, is a task that is often overlooked.

Regular maintenance reduces the risk of flooding or standing water, helps to maintain the structural integrity of the system, and more importantly, improves the water quality for our environment.

Collapsed or broken pipes can cause excess sediment to enter our lakes and streams. According to a Soil Erosion and Sedimentation Control statistic, it is estimated that over 4.5 billion tons of sediment pollute the rivers of this country each year.

What to look for?

Check your ditch or swale to see if it needs to be re-graded to provide positive drainage.

Check driveway culverts to make sure they are not filled with excess sediment and restricting water flow.

Check for illicit discharge connections (discharge of pollutants or non-storm water materials into the storm sewer.)

Sink holes over culverts or drain pipes may indicate a collapsed pipe.

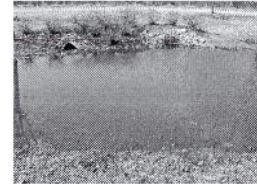
Check catch basins for leaf, debris or sediment build up. Over time, catch basins become filled with sediment and need to be cleaned out to improve water quality and water flow. It is important to properly dispose of this sediment; some material may be polluted with a high level of contaminants that will need to be taken to a hazardous waste landfill.

Inspect pipe outlets to ensure openings are clear and free of sediment or blockages.

CULVERT



OUTLETS



CATCH BASINS



Detention Ponds

It may be necessary to perform maintenance on a detention pond to uphold the function and design of the pond. Most detention ponds are designed to control storm water and provide a temporary storage area for sediment and pollutants to settle out in the pond before reaching our waterways. As a general rule, ponds do not require maintenance for several years; however, some ponds will require the removal of excess sediment and silt that has built-up over a long period of time.

If it is determined that the pond needs material removed or structural repairs, a maintenance permit is required to perform the necessary work. Mainly a detention pond should be checked and cleaned of any trash or debris and pipe outlets should be inspected to ensure there are no blockages that may be restricting water flow.



Protecting our Environment

Storm water maintenance is a small but significant role in helping to improve the water quality in human, plant and animal life for present and future generations. Please contact our Code Enforcement Department at 248-451-4880 to report any trash, debris, excessive erosion/sediment, unusual odors or illicit discharges to our storm systems and detention ponds.

West Bloomfield Development Services Department will be sending out information on Storm Sewer maintenance in the near future. You can always contact us at 248-451-4824 or visit our website at wbtwp.com for further information.

