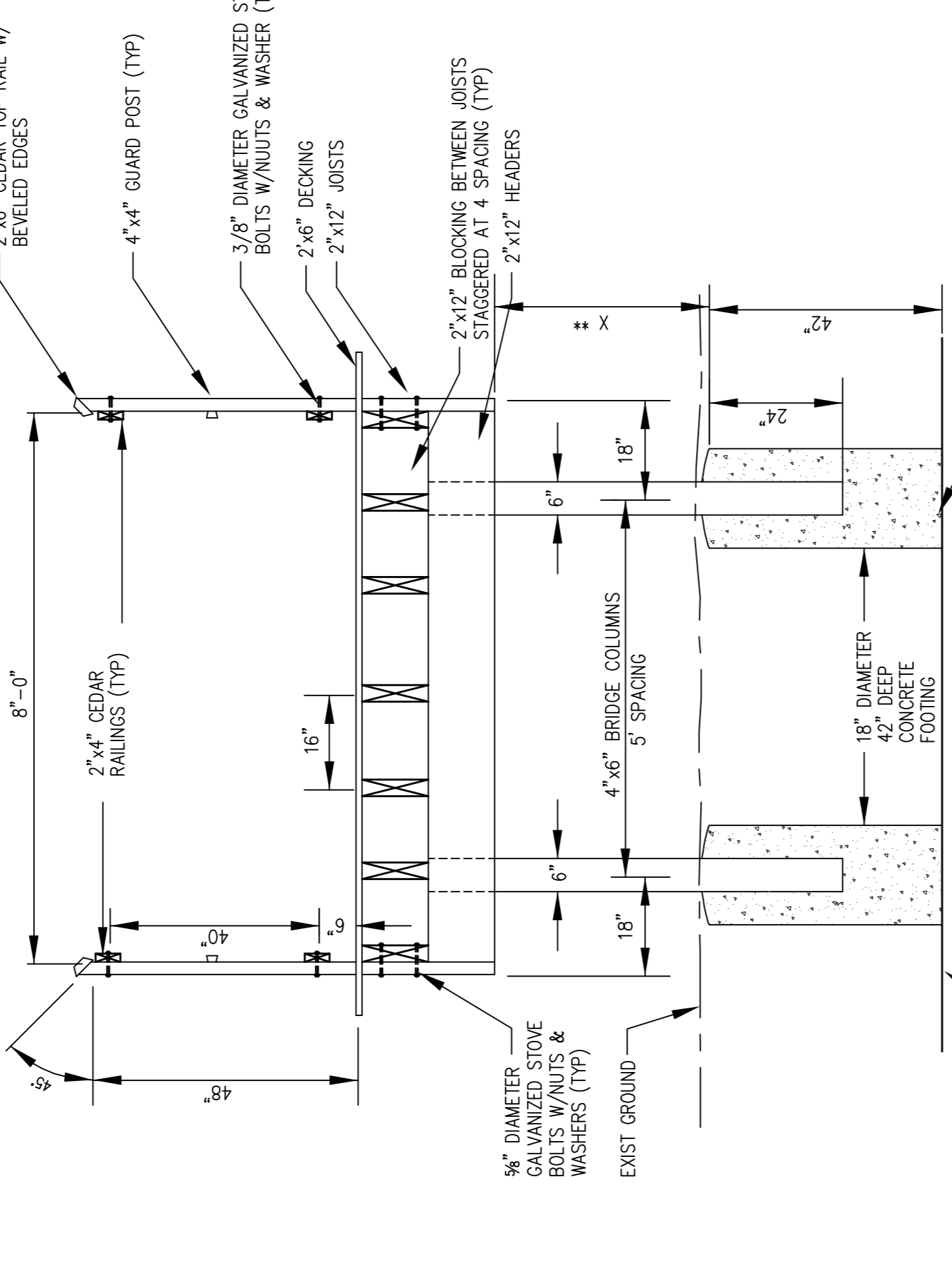
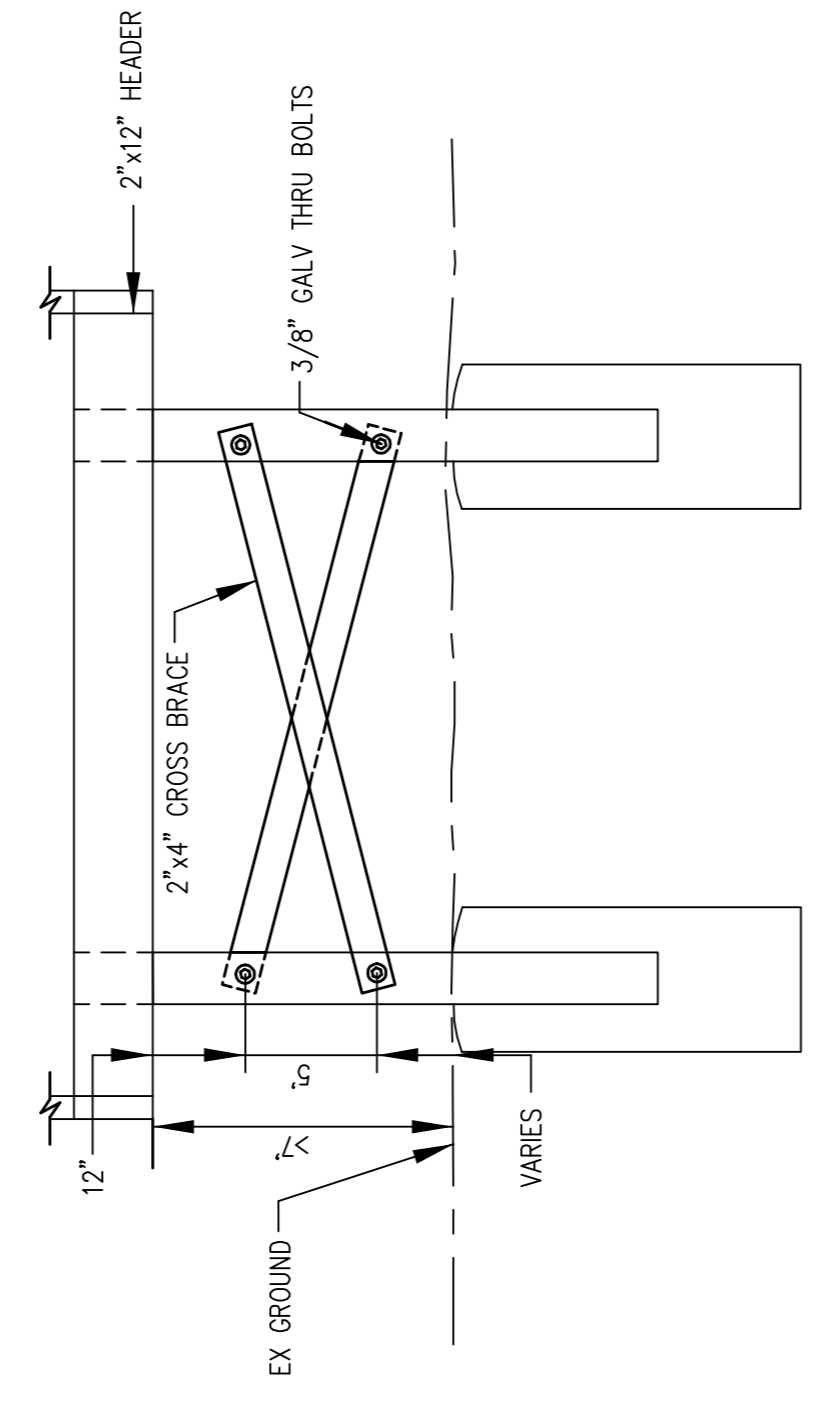


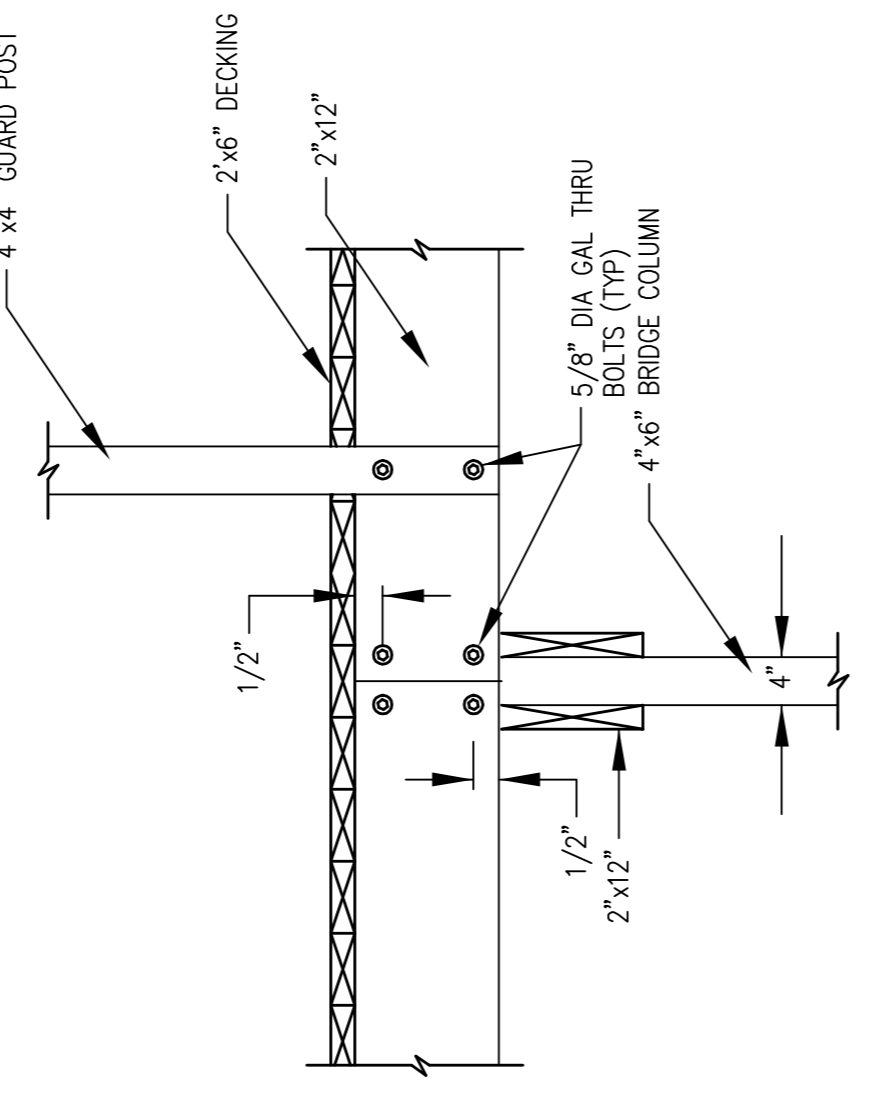
TYPICAL SIDE VIEW
SCALE: 1/4"=1'-0"



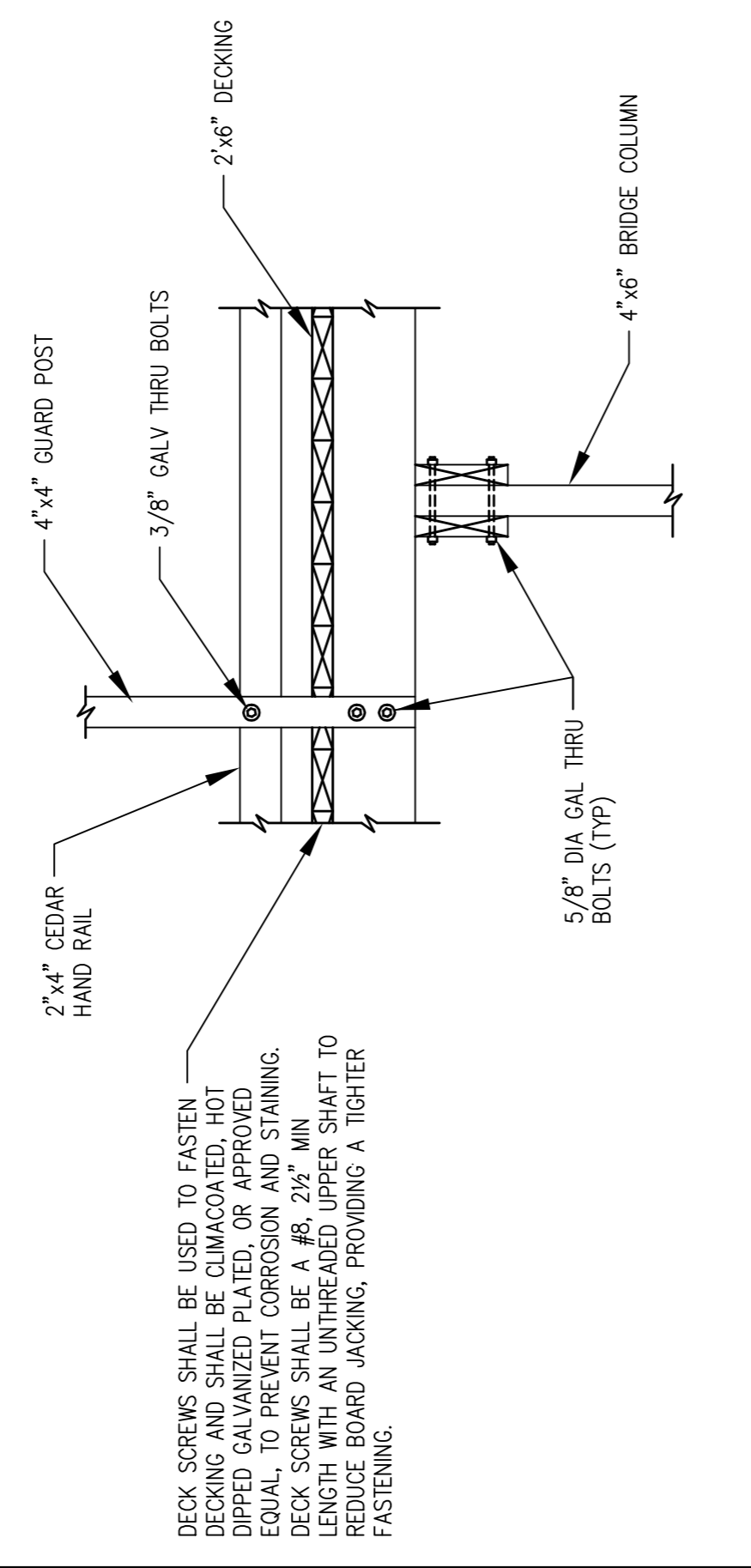
A SECTION
SCALE: 1/2"=1'-0"



DETAIL-3 BOARDWALK CROSS BRACING DETAIL
NOT TO SCALE



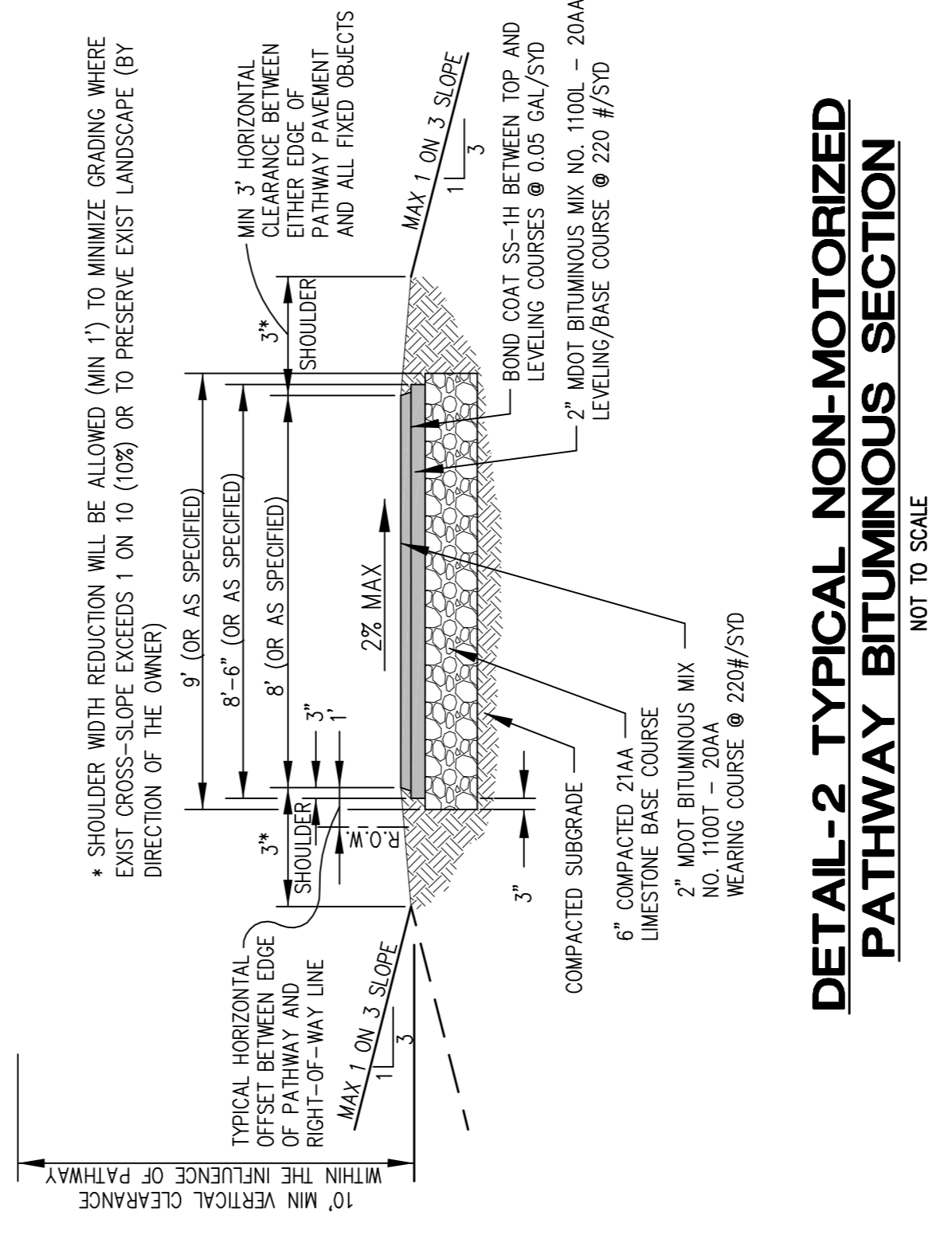
TYPICAL SPLICE JOINT DETAIL
SCALE: 3/4"=1'-0"



DETAIL B
SCALE: 1/2"=1'-0"

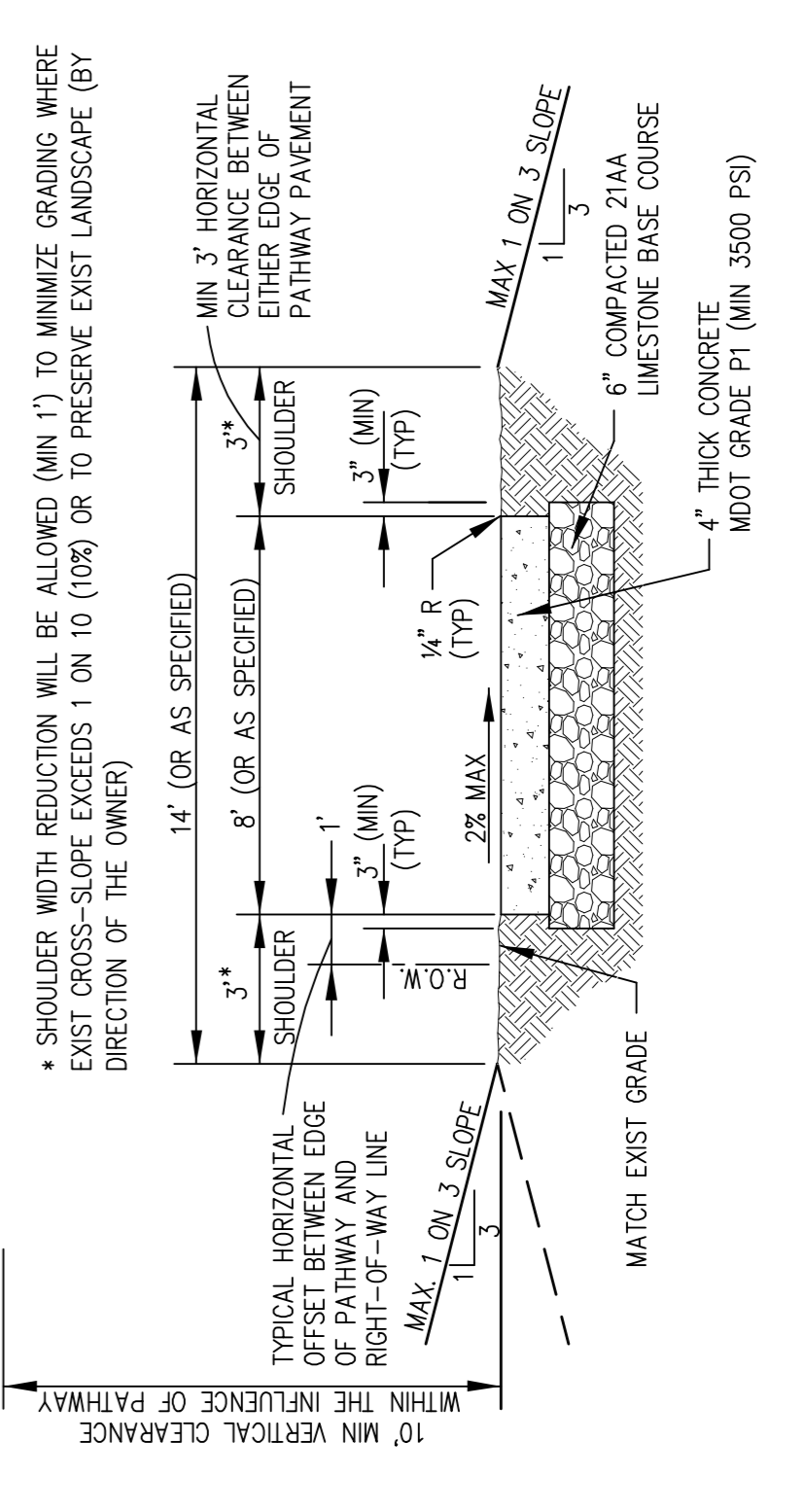
DECK SCREWS SHALL BE USED TO FASTEN DECKING AND SHALL BE CLIMACOATED, HOT DIPPED GALVANIZED PLATED, OR APPROVED COAL TO PREVENT CORROSION AND STAINING. SCREWS SHALL BE 1/2" LONGER THAN THE LENGTH WITH AN UNDER-HEAD LIFTER SHAFT TO REDUCE BOARD JACKING, PROVIDING A TIGHTER FASTENING.

* SHOULDER WIDTH REDUCTION WILL BE ALLOWED (MIN. 1') TO MINIMIZE GRADING WHERE EXIST CROSS-SLOPE EXCEEDS 1 ON 10 (10%) OR TO PRESERVE EXIST LANDSCAPE (BY DIRECTION OF THE OWNER)

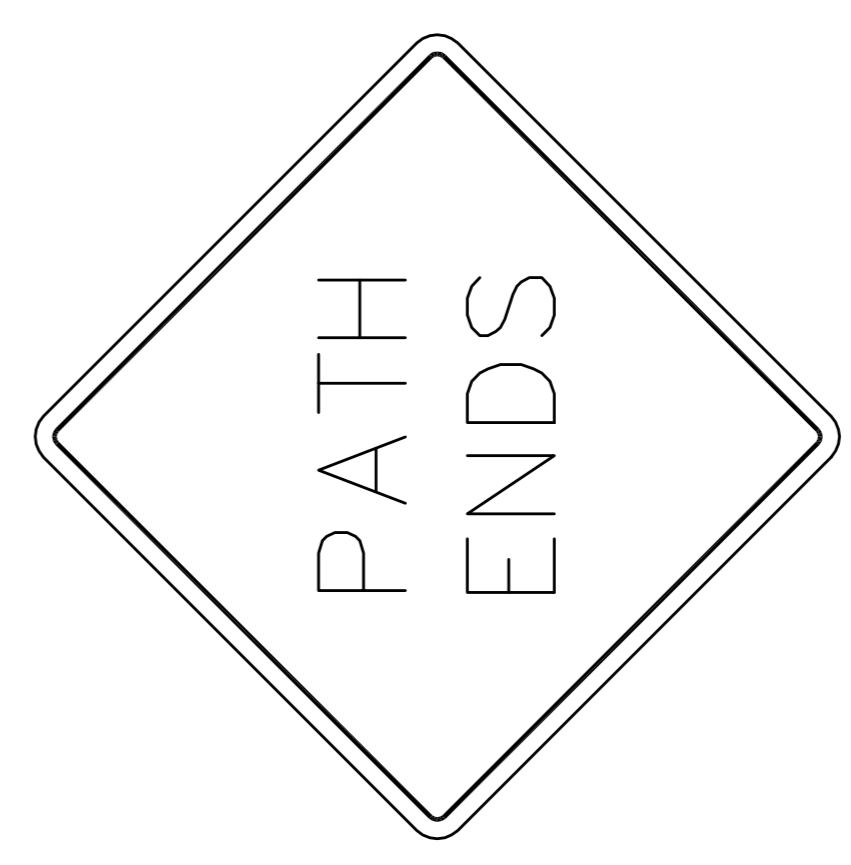


DETAIL-2 TYPICAL NON-MOTORIZED PATHWAY BITUMINOUS SECTION
NOT TO SCALE

* SHOULDER WIDTH REDUCTION WILL BE ALLOWED (MIN. 1') TO MINIMIZE GRADING WHERE EXIST CROSS-SLOPE EXCEEDS 1 ON 10 (10%) OR TO PRESERVE EXIST LANDSCAPE (BY DIRECTION OF THE OWNER)



DETAIL-1 TYPICAL NON-MOTORIZED PATHWAY CONCRETE SECTION
NOT TO SCALE



- NOTES:
- SIGNS SHALL BE 18"x18" AND CONSTRUCTED OF .063 ENGINEERING GRADE REFLECTIVE ALUMINUM WITH 1-1/2" RADIUS AT CORNERS.
 - SIGNS SHALL HAVE A YELLOW BACKGROUND WITH BLACK COPY AND BLACK OUTLINE.
 - SIGN POST AND FASTENERS SHALL BE PER ROAD COMMISSION FOR OAKLAND OAKLAND STANDARDS.
 - SIGN LOCATION TO BE DETERMINED BY TOWNSHIP ENGINEER.

TYPICAL NON PATH SIGNAGE
NOT 0T SCALE

GENERAL NOTES:

- ALL WOOD SHALL BE PRESSURE TREATED (EXCEPT FOR CEDAR)
- ABOVE GROUND CONTACT WOOD SHALL MEET THE INTERNATIONAL BUILDING CODE STANDARDS AND THE AMPA (4A) STANDARDS.
- GROUND CONTACT WOOD SHALL MEET THE INTERNATIONAL BUILDING CODE STANDARDS AND THE AMPA (4A) STANDARDS.
- STRUCTURAL GROUND CONTACT WOOD SHALL MEET THE INTERNATIONAL BUILDING CODE STANDARDS AND THE AMPA (4C) STANDARDS.

WEST BLOOMFIELD TOWNSHIP
4550 WALNUT LAKE ROAD
WEST BLOOMFIELD MICHIGAN 48325-0130

NON-MOTORIZED PATH STANDARD DETAIL SHEET

SCALE:	NONE	REV.	JANUARY 2002	G.M.M.	SHEET NO.
DATE DRAWN:	5/26/09	REV.	SDA MARCH 2009		
APPR. BY:	GM	REV.	SDA MARCH 2009		1 OF 1
DRAWN BY:	NMG	REV.	SDA MARCH 2009		